



INDOFINE Chemical Company, Inc.

121 Stryker Lane, Bldg. 30, Suite 1 • Hillsborough, NJ 08844 • U.S.A.

Phone: (908) 359-6778 • FAX: (908) 359-1179

website: www.indofinechemical.com

e-mail: chemical@indofinechemical.com

CERTIFICATE OF ANALYSIS

Cat No.: 020535

Product: COUMESTROL

Cas Number: [479-13-0]

Lot Number: 00092502

Chemical Formula: C₁₅H₈O₅

Molecular Weight: 268.23

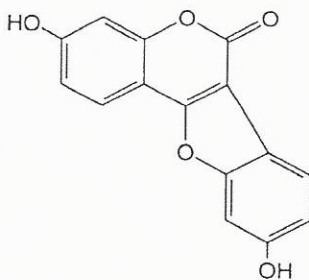
Melting Point: 380-385°C

Appearance: Beige powder

Solubility: Soluble in DMSO

Storage: Cool dry place

Purity (HPLC): 99.6%





INDOFINE Chemical Company, Inc.

121 Stryker Lane, Bldg. 30, Suite 1 • Hillsborough, NJ 08844 • U.S.A.

Phone: (908) 359-6778 • FAX: (908) 359-1179

website: www.indofinechemical.com

e-mail: chemical@indofinechemical.com

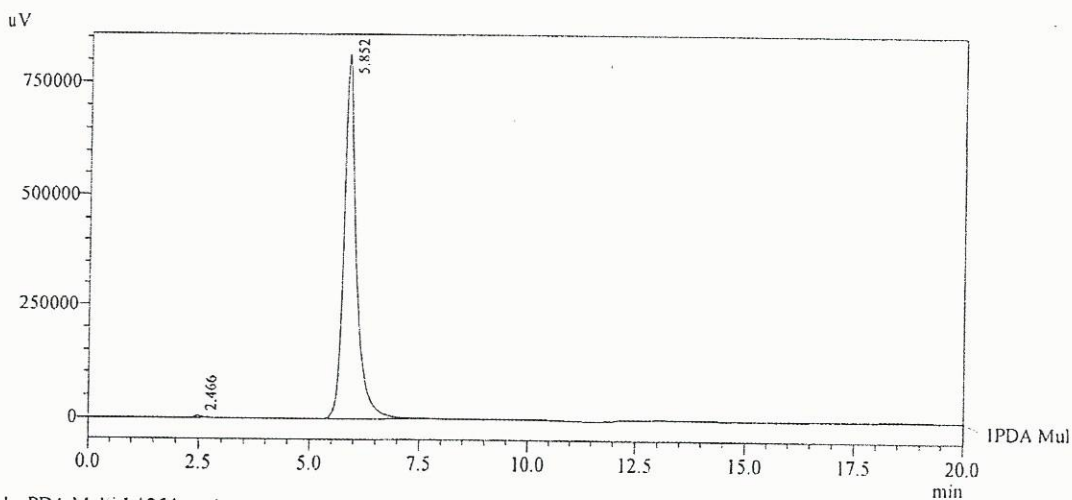
HPLC ANALYSIS

Acquired by : Madhuri
Sample Name : Coumestrol
Sample ID : Lot No: 00092502
Injection Volume : 20 uL
Data Filename : 180111C.lcd
Method Filename : Linear Isocratic.M.lcm

Cat. No.: 020535
Product name: Coumestrol
Lot No.: 00092502

Description:
Column : Inertsil C-18, 250X4.6mm 5.0µm
Flow : 1.000ML/min.
Mobile Phase : A(50% of 0.05% TFA) B(50% of ACN)

Chromatogram



1 PDA Multi 1 / 254nm 4nm

PeakTable

PDA Ch1 254nm 4nm

Peak#	Ret. Time	Area	Height	Area %
1	2.466	55298	5251	0.342
2	5.852	16104054	812404	99.658
Total		16159353	817655	100.000